

PRIME DAILY

June 12, 2025



Wall Street Closes Lower on Rising Geopolitical Concerns

US markets closed lower on Wednesday as Middle East tensions weighed on investor sentiment, despite encouraging developments on both inflation and trade fronts that provided earlier market support.

Crude oil prices jumped more than 4% to two-month highs after reports emerged that the U.S. was preparing to evacuate its Iraqi embassy amid escalating Middle East security concerns.

Markets opened higher following the Labour Department's closely watched consumer price report, which showed May inflation rising slightly below expectations. The tame reading eased concerns about tariff-induced price pressures that had been weighing on market sentiment.

Additional buying interest emerged after U.S. and Chinese officials announced they had reached a framework agreement in principle to resolve trade disputes between the world's two largest economies.

President Trump confirmed on Wednesday that the U.S.-China agreement has been finalised. Under the terms, China will supply critical magnets and rare earth minerals to the United States, while the U.S. will restore access for Chinese students to American colleges and universities.

Despite these positive developments on inflation and trade, escalating Middle East tensions ultimately overshadowed the encouraging news, leaving markets lower by day's end as investors awaited further clarity on geopolitical developments.

Back home, the Nifty's decisive attempt to breach the 25,200 resistance threshold proved unsuccessful, precipitating a decline of more than hundred points from the session's high of 25,222. A sustained breakout above 25,200 on a closing basis remains imperative for bullish momentum. Conversely, the 25,000-25,050 zone presents immediate technical support.



Global Equity Indices				
	Close	Abs. Change	% Change	
Indian Indices				
Sensex	82,515	123.4▲	0.15%	
Nifty	25,141	37.2▲	0.15%	
Midcap	59,388	-293.3▼	-0.49%	
Small cap	18,799	-101.0▼	-0.53%	
US Indices				
Dow Jones	42,866	-1.1▼	0.00%	
S&P 500	6,022	-16.6▼	-0.27%	
Nasdaq	19,616	-99.1▼	-0.50%	
European Indices				
FTSE	8,864	11.3▲	0.13%	
DAX	23,949	-38.7▼	-0.16%	
CAC	7,776	-28.4▼	-0.36%	
Asian Indices				
Shanghai	3,407	22.4▲	0.66%	
Hang Seng	24,280	116.8▲	0.48%	
Nikkei	38,149	-62.0▼	-0.16%	

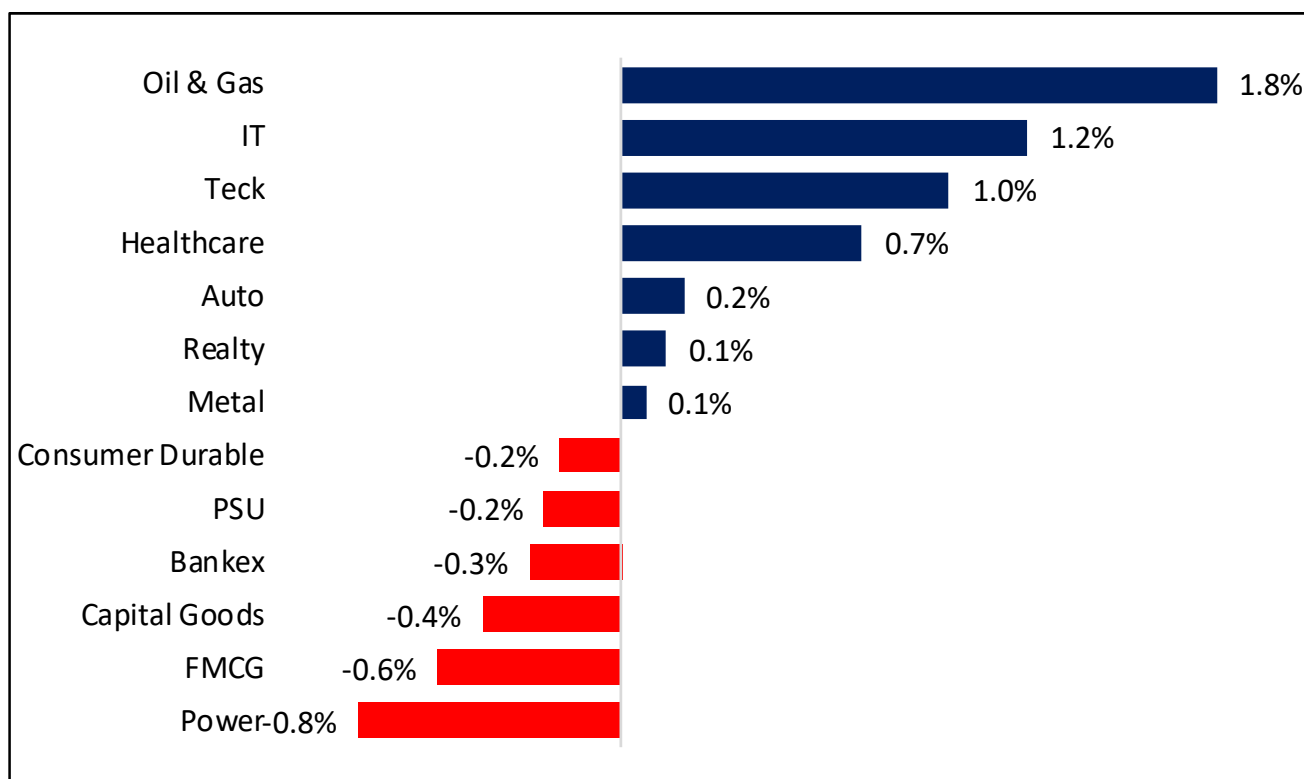
Indices Futures				
	Close	Abs. Change	% Change	
IFSC Nifty				
IFSC Nifty	25,228	13.0▲	0.05%	
US Indices				
Dow Jones	42,734	-174.0▼	-0.41%	
S&P 500	6,005	-24.3▼	-0.40%	
Nasdaq	21,788	-99.5▼	-0.45%	
European Indices				
FTSE	8,840	-36.5▼	-0.41%	
DAX	23,787	-203.0▼	-0.85%	
Asian Indices				
Shanghai	3,887	5.2▲	0.13%	
Hang Seng	24,254	-89.0▼	-0.37%	
Nikkei	38,120	-320.0▼	-0.83%	

Nifty50 Index Contributors

Top Five (Positive Contributors)		
Stock	Points	% Change
INFY	27.9	0.11
RELIANCE	15.6	0.06
ICICIBANK	12.6	0.05
HCLTECH	12.6	0.05
TECHM	3.7	0.01

Bottom Five (Negative Contributors)		
Stock	Points	% Change
HDFCBANK	-25.1	-0.10
POWERGRID	-5.6	-0.02
SHRIRAMFIN	-4.4	-0.02
BAIFINANCE	-4.2	-0.02
HINDUNILVR	-3.7	-0.01

BSE Sectoral Leaders & Laggards

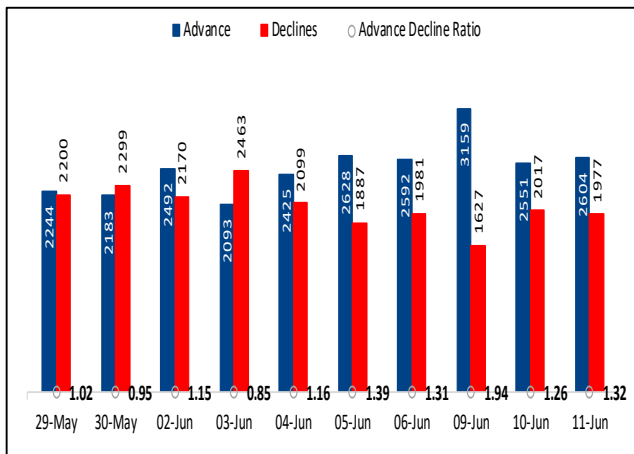


Nifty50 Index Top Pops & Drops

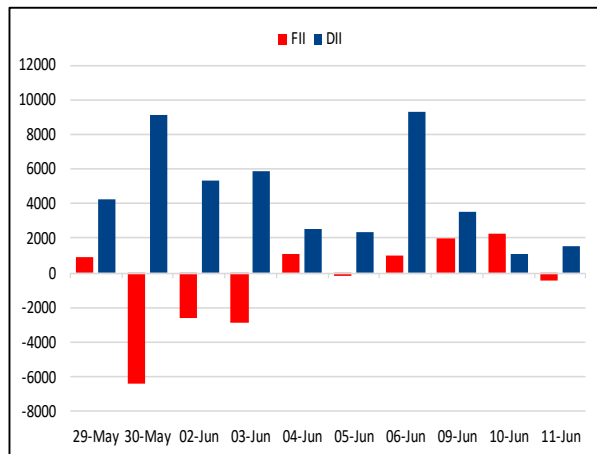
Nifty50 Top Five Gainers			
Symbol	LTP	% Change	Volume
HCLTECH	1,721.9	3.23	5,085,821
INFY	1,631.1	2.20	10,597,410
TECHM	1,637.5	1.65	2,660,949
WIPRO	258.9	1.59	180,500,000
ONGC	247.3	1.08	20,842,417

Nifty50 Top Five Losers			
Symbol	LTP	% Change	Volume
SHRIRAMFIN	686.1	-2.05	4,586,055
POWERGRID	295.5	-1.86	10,941,604
ADANIENT	2,581.2	-1.22	745,432
ADANIPORTS	1,456.4	-1.18	2,192,673
BEL	392.9	-1.13	18,042,738

BSE Advance & Declines



Institutional Activities



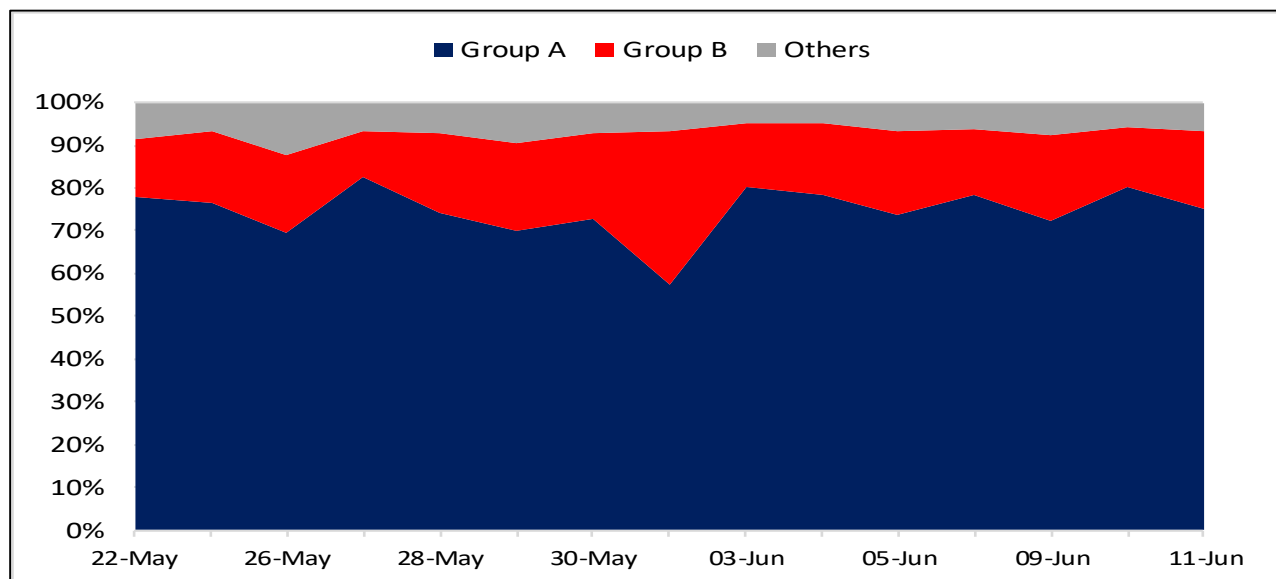
52 Week High Stocks

	11-Jun-25	10-Jun-25
BSE Universe	179	188
BSE Group A Stocks Hitting 52 Week High		
Stocks	Price	52 Week High
ABCAPITAL	246.3	251.0
DBREALTY	227.4	235.8
GILLETTE	10232.4	10772.8
WOCKPHARMA	1832.6	1845.0
DODLA	1361.2	1380.0




52 Week Low Stocks

	11-Jun-25	10-Jun-25
BSE Universe	47	45
BSE Group A Stocks Hitting 52 Week Low		
Stocks	Price	52 Week Low
Nil		

BSE Cash Market Turnover Participant-wise



News Highly Sensitive to Stock Price

Impact	Stock	News
	Zydus Lifesciences	Company has received EIR report from the US FDA for inspection conducted at its API manufacturing facility at Ankleshwar. This facility underwent an inspection from 10th to 14th March 2025, and the inspection has been classified as No Action Indicated (NAI). The US FDA has concluded that this inspection is closed.
	Hindustan Copper	Hindustan Copper Limited (HCL) announced plans to invest approximately Rs 2,000 crore over the next 5-6 years. The company aims to expand its mine capacity from the current 3.5 MTPA to 12.20 MTPA by FY31.
	Tanla Platforms	The company to consider the proposal for buyback of equity shares in its board meeting on June 16. Company had net cash of about Rs 950 crore as of March-2025.

Stock	News
GRSE	Garden Reach Shipbuilders and Engineers (GRSE) Ltd, signed a contract for construction of two Coastal Research Vessels (CRVs) for the Geological Survey of India (GSI).
Oil and Gas	India's natural gas consumption is likely to rise by close to 60 per cent by 2030 and more than double by 2040, on the back of rise in usage of the fuel as CNG in automobiles and for cooking and industrial purposes, according to a study by oil regulator PNGRB.
Indian Oil Corp	Indian Oil has sharply increased its bulk diesel market share to 53.5% in April-May 2025 from 43.6% a year earlier, overtaking rivals Reliance Industries and Nayara Energy. The surge follows a strategic shift under new chairman A.S. Sahney, who prioritized market dominance over high margins.
HG Infra	Company has been declared as lowest bidder for transmission service provider to establish Inter State Transmission system for "Eastern Region Generation Scheme – I (ERGS-I)" through tariff based competitive bidding process in the state of Odisha. This is 35 year operational contract worth Rs 43.1 crore per year.
Dilip Buildcon and Sterlite Tech	Sterlite Technologies, through its Global Services Business (the demerged business vertical), in consortium with Dilip Buildcon , has entered into an Agreement with Bharat Sanchar Nigam (BSNL). The agreement pertains to the design, supply, construction, installation, upgradation, operation, and maintenance of the middle-mile network under BharatNet for the Jammu & Kashmir and Ladakh Telecom Circles. The value of the project is Rs 2631.14 crore
Nazara Technologies	Nazara Technologies Ltd. said its Committee of Independent Directors has reviewed and recommended the ongoing open offer by Axana Estates LLP, Plutus Wealth Management LLP, and Junomoneta Finsol Pvt. Ltd. as fair and reasonable. The committee evaluated the offer price of Rs 990 per share under SEBI's Substantial Acquisition of Shares and Takeovers (SAST) Regulations and shared its findings through an exchange filing.
NIBE	Company has received a purchase order from one of the leading Infra and Defence Company for Supply of Armor Plate MIL12560 (ARMOUR) for a total consideration of Rs 23.33 crore (incl. of all taxes). The order is to be executed over the next 10 months.
Marine Electricals	The company received an order worth Rs 60 crore from ACG Universal Capsule for the supply, installation, testing & commissioning of the power distribution system.

Stock	News
RailTel	RailTel Corporation of India Ltd, has secured a work order worth Rs 11.94 crore (inclusive of taxes) from South Eastern Coalfields Limited (SECL) for providing managed bandwidth services under an operating expenditure (opex) model.
Jio BlackRock	Jio BlackRock Investment Advisers Private Limited (JBIAPL), the investment advisory arm of Jio Financial Services and BlackRock's joint venture, has secured certificate of registration from SEBI to operate as an investment adviser in the country.
Waaree Energies	Waaree Energies said its wholly-owned subsidiary Waaree Solar Americas has secured an order for the supply of 599 MW solar modules. The company said it received the order from a renowned customer who is a developer and owner-operator of utility scale solar and energy storage projects across the US. The delivery of the module supply is scheduled to take place in the calendar year 2026.
Lemon Tree	Lemon Tree Hotels announces its latest signing — Lemon Tree Premier, Mhow, Madhya Pradesh. The property shall be managed by Carnation Hotels Private Limited, a wholly-owned subsidiary of Lemon Tree Hotels Limited. It will feature 72 well-appointed rooms, a restaurant and others. The Indore Airport, the nearest airport, is approximately 30 kms from the property. Indore Railway Station is about 29 kms away from the property. The resort is also well-connected by road, offering easy access to both public and private transport.

Key Events

U.S. consumer prices rise by 2.4% in May, slower than anticipated

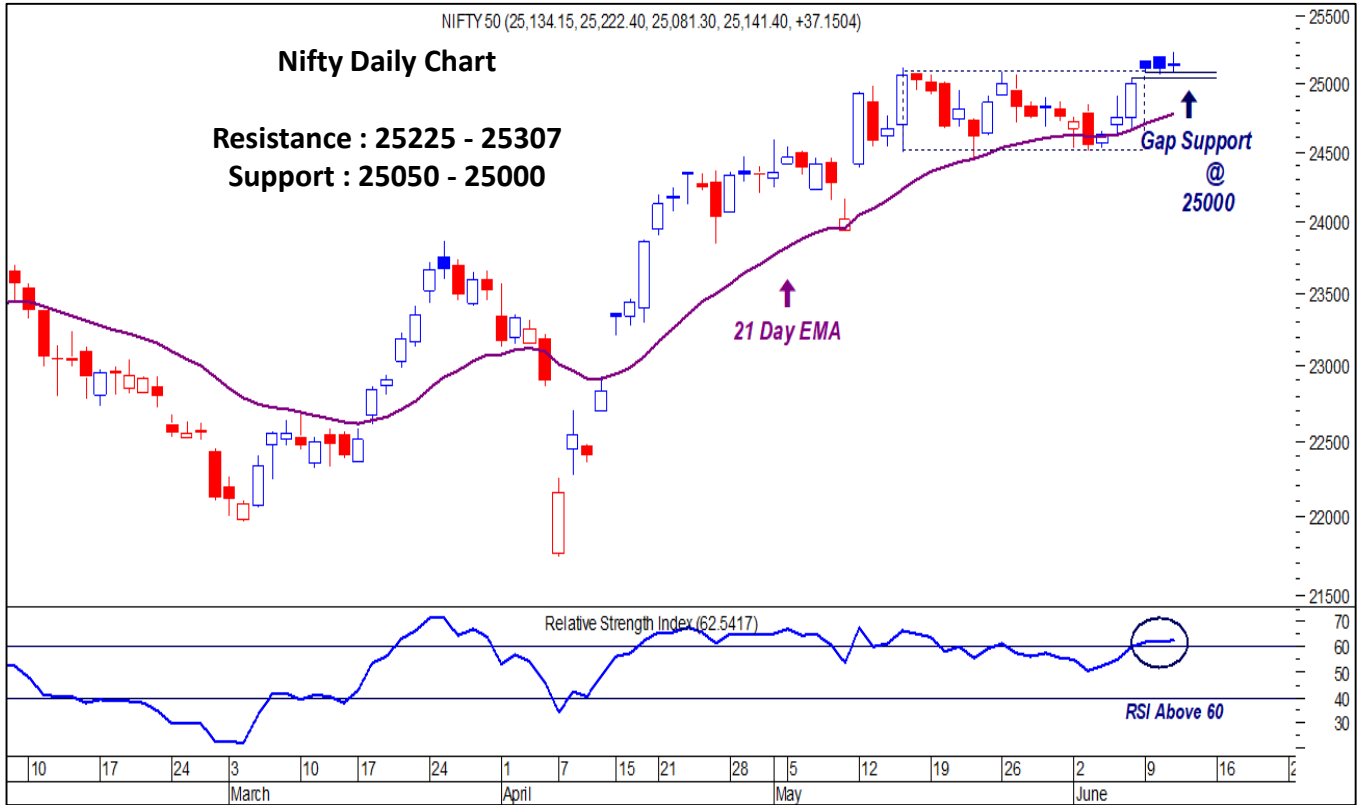
U.S. consumer prices rose at a slower-than-anticipated annualized pace in May, even as concerns swirled around the potential impact of President Donald Trump's aggressive tariff agenda on inflation. The Labor Department's consumer price index increased by 2.4% year-over-year last month, accelerating from 2.3% in April but cooler than expectations of 2.5%.

On a monthly basis, the measure eased to 0.1%. Economists had projected that the gauge would match April's reading of 0.2%. An uptick in shelter costs underpinned much of May's increase, although this was offset by falling gasoline prices that dragged energy expenses down 1%, the Bureau of Labor Statistics said in a statement.

EIA Crude Oil Inventories Show Slight Recovery; Demand Still Strong

The Energy Information Administration's (EIA) Crude Oil Inventories report, a key indicator of the balance between supply and demand in the US oil market, showed a decrease of 3.644 million barrels for the week. This figure represents a slight recovery from the previous week's decline, but still indicates a robust demand for crude oil. The latest decrease in inventories was less than the forecasted drop of 2.4 million barrels. This suggests that demand for crude oil remains strong, but not as strong as analysts had predicted. Nevertheless, the decrease in inventories is still a bullish sign for crude prices, as it indicates that demand is outstripping supply.

Nifty : Another Sideways Move, No Damage In Prevailing Up Trend. Bullish Above 25225.



Nifty OIL & GAS Index: Decisive Bullish Breakout, Positive Momentum Will Continue.

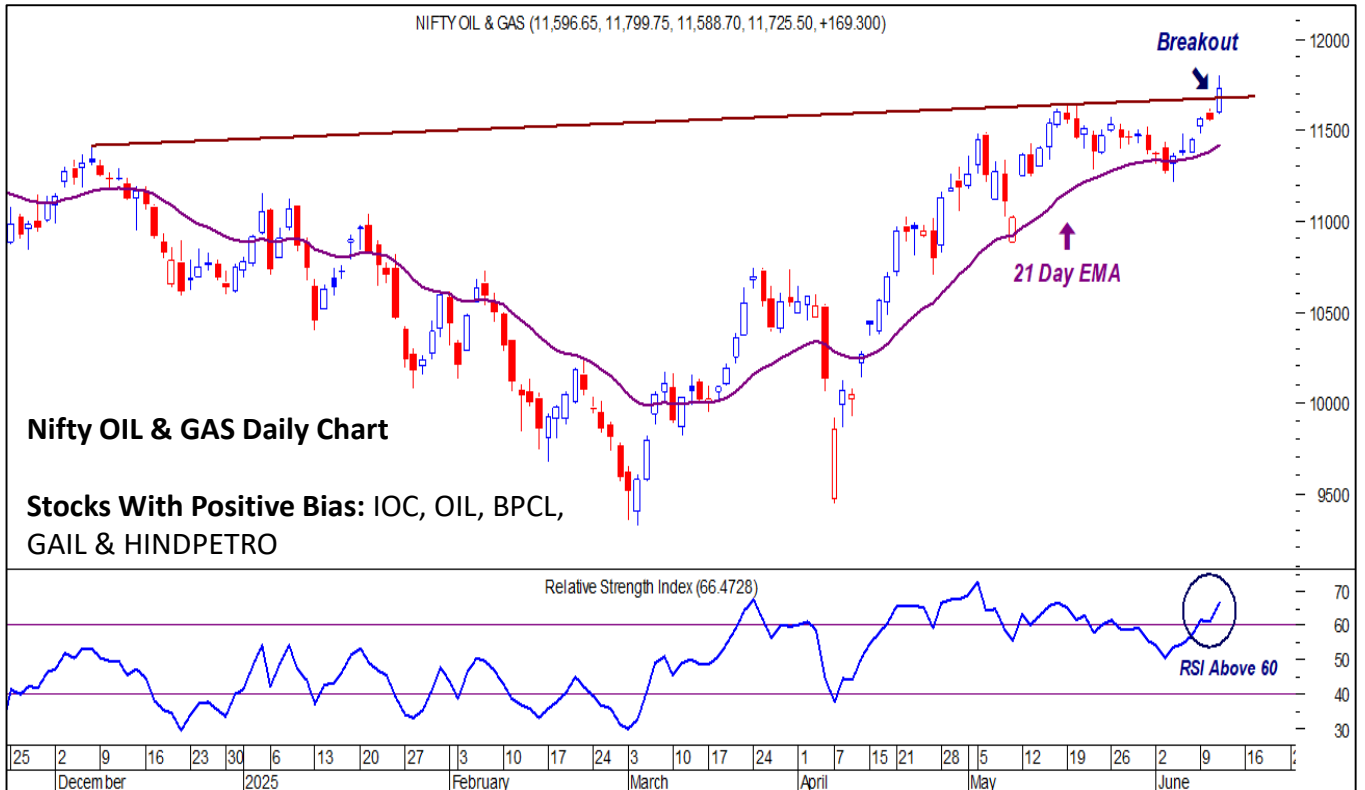


Chart With Interesting Observations

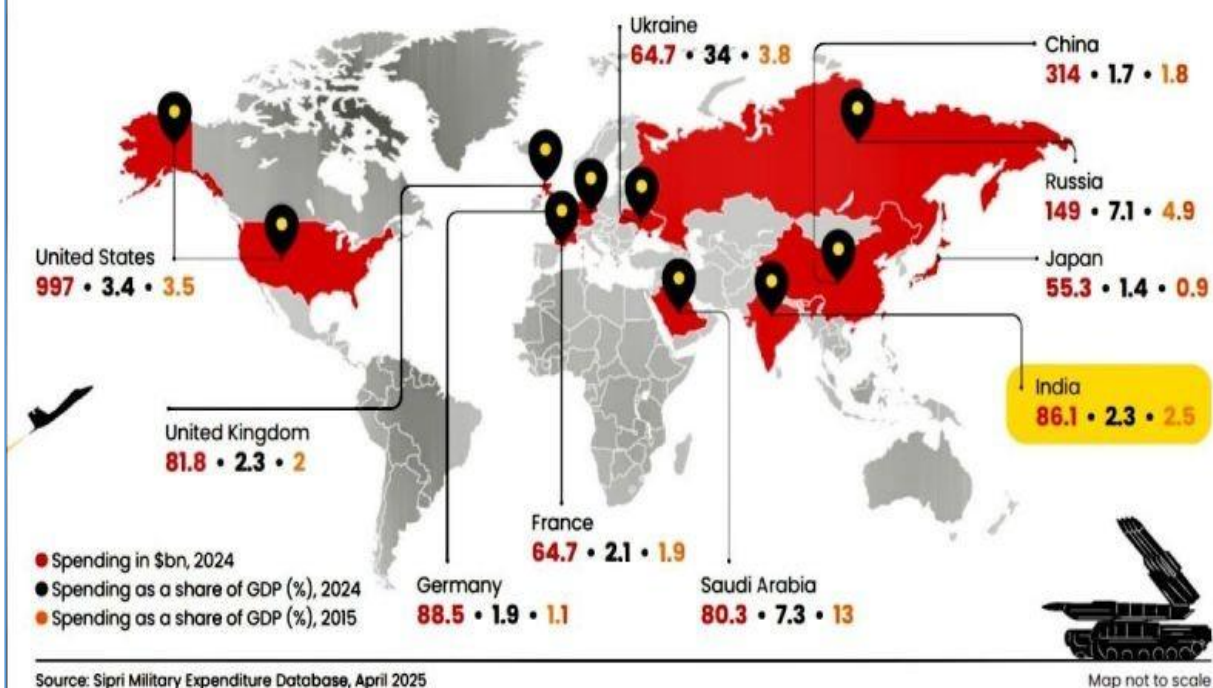
India's Defence Spending Has Declined In Recent Years

- India is the world's fifth-biggest spender on defense. India's defense spending is \$86.1 billion, which is 2.3% of its GDP in 2024 and 2.5% in 2015.
- India's defense spending as a share of GDP has decreased in recent years. India sets aside around 2% of its GDP for defence, slightly more than China's 1.6%, which may seem adequate at first glance. But in absolute terms, China's defence budget is projected at \$314bn, nearly four times that of India's.
- The United States spends \$997 billion and Ukraine has seen a significant hike in its defense spending.

Global Defence Spending

India's Defence Spending Has Yet to Realise its Potential

India is the world's fifth-biggest spender. Like many countries its defence spending as a share of GDP has come down in the past few years. For obvious reasons Ukraine has seen a significant hike



F&O Highlights

LONG BUILD UP WAS SEEN IN NIFTY FUTURES

Create Longs with the SL of 25050 Levels

- Nifty rose for the 6th session on the trot and ended the day with a minor gain of 37 points or 0.15% at 25141.
- Long Build-Up was seen in the Nifty Futures where Open Interest rose by 0.42% with Nifty rising by 0.15%.
- Long Unwinding was seen in the Bank Nifty Futures where Open Interest fell by 0.96% with Bank Nifty falling by 0.30%.
- Nifty Open Interest Put Call ratio remained unchanged at 0.97 levels.
- Amongst the Nifty options (12-Jun Expiry), Call writing is seen at 25300-25400 levels, indicating Nifty is likely to find strong resistance in the vicinity of 25300-25400 levels. On the lower side, an immediate support is placed in the vicinity of 25100-25000 levels where we have seen Put writing.
- Long build-up was seen by FI's in the Index Futures segment where they net bought worth 1,246 cr with their Open Interest going up by 587 contracts.

Index	Expected Trend	Prev. Close	Buy/Sell	Stop Loss	Target
NIFTY FUT	UP	25211.70	BUY AROUND 25150	25050	25350
BANK NIFTY FUT	UP	56648.60	BUY AROUND 56300	56000	57000

Nifty50 Snapshot			
	11-June-25	10-June-25	% Chg.
Nifty Spot	25141.40	25104.25	0.15
Nifty Futures	25211.70	25160.60	0.20
Premium/ (Discount)	70.30	56.35	N.A.
Open Interest (OI)	1.72	1.71	0.42
Nifty PCR	0.97	0.97	0.01

Bank Nifty Snapshot			
	11-June-25	10-June-25	% Chg.
Bank Nifty Spot	56459.75	56629.10	-0.30
Bank Nifty Futures	56648.60	56764.60	-0.20
Premium/ (Discount)	188.85	135.50	N.A.
Open Interest (OI)	0.23	0.23	-0.96
Bank Nifty PCR	0.96	0.98	-2.28

Nifty Options Highest OI (Weekly)			
CALL		PUT	
Strike Price	Open Interest (Contracts)	Strike Price	Open Interest (Contracts)
26000	190826	24500	130974

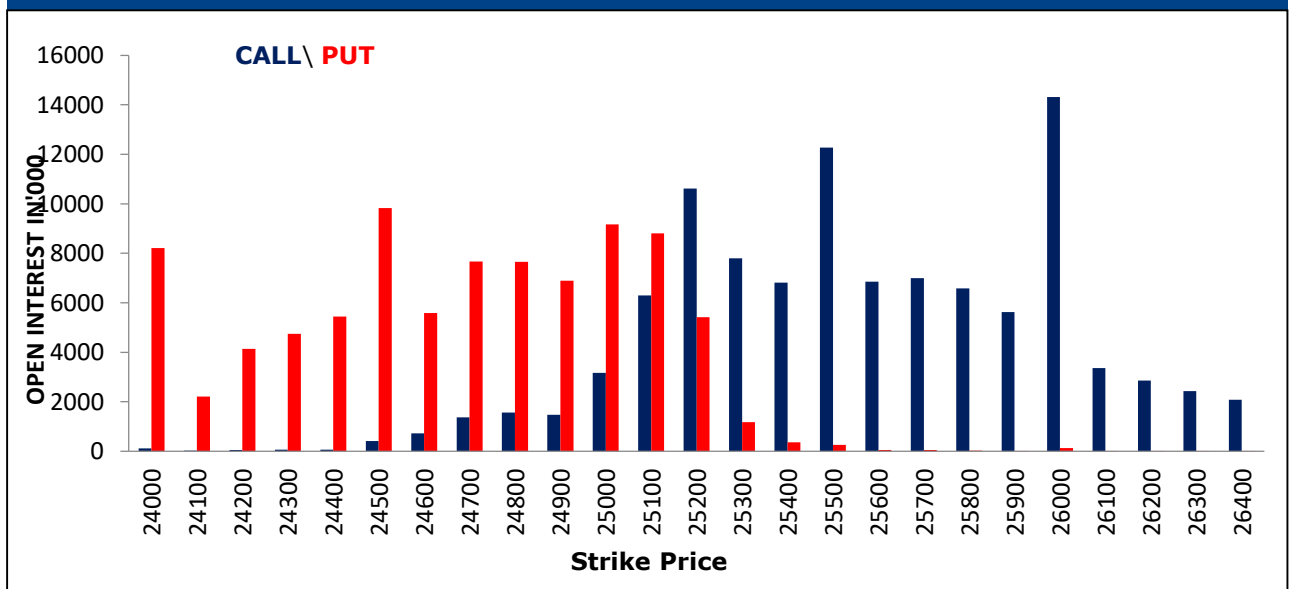
FII Activity On 11 June 2025

	BUY		SELL		NET	OPEN INTEREST	
	Contracts	Value (Rs Cr)	Contracts	Value (Rs Cr)	(Rs Cr)	Contracts	Value (Rs Cr)
Index Futures	17968	3316	11493	2070	1246	155495	28286
Nifty Futures	13286	2516	5849	1109	1406	106263	20136
Bank Nifty Fut.	3638	629	4464	770	-141	24211	4143
Index Options	7150975	1340333	6848257	1283386	56947	2330650	431489
Nifty Options	6752301	1272492	6446736	1215171	57322	1914880	361071
Bank Nifty Opt.	330948	56645	333674	57004	-359	377839	64216
Stock Futures	264808	17277	281131	18490	-1213	5819607	383741
Stock Options	1105410	76822	1157342	80474	-3653	1362145	90634

FII's Open Interest (Contracts)

Date	Index Futures	Nifty Futures	Bank nifty Futures	Index Options	Nifty Options	Bank Nifty Options	Stock Futures	Stock Options
11-June-25	155495	106263	24211	2330650	1914880	377839	5819607	1362145
10-June-25	154908	106060	24205	2169546	1757653	378695	5831268	1259973
Net Contracts	587	203	6	161104	157227	-856	-11661	102172

Nifty Weekly (12- June) Option Open Interest Distribution



Top Gainers OI Wise		
Company	Future OI (%)	Price (%)
UNITDSPR	38	-7
KAYNES	18	0
PPLPHARMA	11	-1
LICI	10	2
MANKIND	9	0

Top Losers OI Wise		
Company	Future OI (%)	Price (%)
BIOCON	-5	4
HINDCOPPER	-5	-2
TITAGARH	-5	-1
IREDA	-5	0
GLENMARK	-5	1

Top Gainers Price Wise		
Company	Future OI (%)	Price (%)
OIL	7	6
BPCL	-1	4
BIOCON	-5	4
HCLTECH	-4	3
HINDPETRO	2	2

Top Losers Price Wise		
Company	Future OI (%)	Price (%)
IEX	8	-8
UNITDSPR	38	-7
BSE	1	-4
BDL	8	-4
MCX	0	-3

Long Buildup		
Company	Future OI (%)	Price (%)
LICI	10	2
MANKIND	9	0
UNOMINDA	8	1
OIL	7	6
SYNGENE	5	1

Short Buildup		
Company	Future OI (%)	Price (%)
UNITDSPR	38	-7
KAYNES	18	0
PPLPHARMA	11	-1
MAZDOCK	9	-2
IEX	8	-8

Long Unwinding		
Company	Future OI (%)	Price (%)
HINDCOPPER	-5	-2
TITAGARH	-5	-1
IREDA	-5	0
BHARATFORG	-4	0
MUTHOOTFIN	-4	-1

Short Covering		
Company	Future OI (%)	Price (%)
BIOCON	-5	4
GLENMARK	-5	1
HCLTECH	-4	3
AUBANK	-4	1
BAJAJ-AUTO	-4	1

Securities In Ban For Trade – 12.06.2025			
No.	Company Name	No.	Company Name
1.	ABFRL	5.	IEX
2.	CDSL	6.	IREDA
3.	CHAMBLFERT	7.	RBLBANK
4.	HINDCOPPER	8.	TITAGARH

Economic Calendar

Thursday	Friday	Monday	Tuesday	Wednesday
12 Jun	13 Jun	16 Jun	17 Jun	18 Jun
UK: IIP, Trade Balance India: CPI US: Initial & Conti. Jobless Claims	Japan: IIP, Capacity Utilisation EU: Trade Balance, IIP US: Uni. of Mich. Sentiment India: Trade Balance	China: New & Used Home Sales, Retail Sales, IIP India: WPI US: Empire Mfg.	BoJ Monetary Policy US: Retail Sales, IIP, Capacity Utilisation, NAHB Housing Index	US: Holiday EU: Construction Output BoE Monetary Policy

Open Positional MTF Calls

NO.	RECO DT.	RECO	COMPANY NAME	ENTRY	CMP	SL	TARGET 1	TARGET 2	UPSIDE %	VALID TILL
1	12-MAY-25	BUY	BANKBEES	565.86-548	579.4	537.0	599.0	630.0	9	11-JUL-25
2	26-MAY-25	BUY	CROMPTON GREAVES	355.35-339	352.6	333.0	380.0	391.0	11	10-JUL-25
3	26-MAY-25	BUY	CONSUMEIETF	118.81-115.80	119.4	114.0	124.5	127.0	6	24-AUG-25
4	2-JUN-25	BUY	INDIAN BANK	633.30-612	625.0	594.0	680.0	705.0	13	17-JUL-25
5	4-JUN-25	BUY	MACROTECH DEVELOPERS	1446.50-1340	1,475.8	1300.0	1621.0	1680.0	14	3-AUG-25
6	4-JUN-25	BUY	MTAR TECH*	1637.70-1555	1,721.9	1637.7	1790.0	1920.0	12	3-AUG-25
7	5-JUN-25	BUY	SJVN	102.14-98.50	103.2	96.0	111.0	120.0	16	20-JUL-25
8	5-JUN-25	BUY	SWIGGY	364.80-333	356.1	321.0	421.0	445.0	25	4-AUG-25
9	5-JUN-25	BUY	DCX SYSTEMS	314.15-300	297.4	290.0	345.0	370.0	24	4-AUG-25
10	9-JUN-25	BUY	JSW INFRA	310-287	311.1	279.0	335.0	350.0	13	24-JUL-25
11	9-JUN-25	BUY	AUTOIETF	24.45-23.79	24.4	23.5	25.1	25.7	6	7-SEP-25
12	9-JUN-25	BUY	IREDA	175.87-167	182.3	162.0	192.0	210.0	15	8-AUG-25
13	10-JUN-25	BUY	ITBEES	41.90-42.10	42.3	40.2	44.0	46.0	9	8-SEP-25
14	11-JUN-25	BUY	VRL LOGISTICS	572-584	577.2	529.0	620.0	650.0	13	26-JUL-25

Open Short-Term MTF Calls

NO.	RECO DT.	RECO	COMPANY NAME	ENTRY	CMP	SL	TARGET	UPSIDE %	VALID TILL
1	2-JUN-25	BUY	ELECON	694.60-670	682.4	660.0	744	9.0	16-JUN-25
2	5-JUN-25	BUY	BERGER PAINT	572.25-556	567.2	545.0	607	7.0	26-JUN-25
3	5-JUN-25	BUY	ASTER DM	580.95-567	571.3	555.0	619	8.4	19-JUN-25
4	9-JUN-25	BUY	JINDAL STEEL	972.10-955	955.1	940.0	1028	7.6	30-JUN-25
5	9-JUN-25	BUY	JK TYRE	373.80-361	381.0	355.0	400	5.0	23-JUN-25
6	10-JUN-25	BUY	KAJARIA CERAMIC	1052-1063	1,057.0	1,000.0	1128	6.7	24-JUN-25
7	11-JUN-25	BUY	CEI INDIA	472-467	478.3	444.0	550	15.0	25-JUN-25
8	11-JUN-25	BUY	LTTS	4514-4565	4,584.9	4,350.0	4760	3.8	25-JUN-25

Open Muhurat Trading MTF Picks

NO.	RECO DT.	RECO	COMPANY NAME	ENTRY	CMP	SL	TARGET 1	TARGET 2	UPSIDE %	VALID TILL
1	28-OCT-24	BUY	KARUR VYSYA BANK	214-218	239.6	183.0	249.0	269.0	12	NEXT DIWALI

*= 1st Target Achieved

Open Derivatives Trading Calls

NO	RECO DT	RECO	COMPANY NAME	ENTRY	CMP	SL	TARGET	UPSIDE %	VALID TILL
1	11-JUN-25	BUY	BANK NIFTY 26TH JUNE 56600 CALL OPTION	785	669.0	549.0	1177	75.9	16-JUN-25
2	6-JUN-25	BUY	IDFC FIRST BANK JULY FUT	69-71.40	72.0	67.0	80	11.1	13-JUN-25
3	9-JUN-25	BUY	FEDERAL BANK JUN FUT	212.37-207	209.4	203.0	223	6.5	23-JUN-25
4	9-JUN-25	BUY	NYKAA JUNE FUT	200-202.70	199.2	197.0	213	6.9	23-JUN-25
5	11-JUN-25	BUY	BIOCON JUNE FUT	350-342	355.6	337.0	365	2.6	25-JUN-25
6	11-JUN-25	SELL	BDL JUNE FUT	1906.90-1948	1,896.9	1,982.0	1813	4.4	25-JUN-25

NSE 200 SUPPORT & RESISTANCE

SYMBOL	CLOSE	R2	R1	PIVOT	S1	S2	5 DMA	20 DMA	% Delivery	Trend
ABB	6077.0	6263.0	6170.0	6102.0	6009.0	5941.0	6108.6	5974.9	56.0	Bullish
ABCAPITAL	246.3	253.7	250.0	247.3	243.5	240.8	237.6	224.7	72.3	Bullish
ABFRL	77.3	78.9	78.1	77.4	76.6	75.9	77.2	87.8	49.8	Bearish
ACC	1905.8	1939.9	1922.9	1907.9	1890.9	1875.9	1902.7	1913.8	46.5	Bearish
AMBUJACEM	561.3	572.1	566.7	561.6	556.2	551.1	557.5	560.0	66.5	Bearish
ADANIPOWER	587.1	613.7	600.4	591.7	578.3	569.6	569.8	556.8	35.6	Bullish
ADANIENSOL	904.5	937.3	920.9	908.0	891.6	878.6	895.5	883.1	45.4	Bullish
ADANIGREEN	1046.8	1086.7	1066.8	1050.0	1030.1	1013.3	1032.8	1009.3	30.4	Bullish
ADANIENT	2581.2	2659.5	2620.4	2591.7	2552.6	2523.9	2563.0	2530.2	31.0	Bullish
ADANIPORTS	1456.4	1487.6	1472.0	1460.4	1444.8	1433.2	1465.1	1424.8	61.0	Bullish
ASHOKLEY	240.0	244.0	242.0	240.5	238.5	237.0	240.1	239.3	48.8	Bullish
ALKEM	4885.5	5089.5	4987.5	4903.0	4801.0	4716.5	4884.8	5130.0	85.2	Bearish
APLAPOLLO	1887.2	1942.9	1915.1	1893.5	1865.7	1844.1	1899.6	1840.4	65.9	Bullish
APOLLOHOSP	6927.5	6996.5	6962.0	6912.5	6878.0	6828.5	6919.3	6954.3	72.5	Bearish
ASIANPAINT	2208.8	2232.7	2220.7	2214.0	2202.0	2195.3	2232.9	2284.2	67.4	Bearish
APOLLTYRE	462.5	475.8	469.1	465.3	458.6	454.8	467.3	479.6	52.1	Bearish
AUROPHARMA	1161.0	1208.5	1184.7	1170.6	1146.8	1132.7	1162.7	1173.9	53.2	Bearish
ASTRAL	1525.6	1547.6	1536.6	1526.4	1515.4	1505.2	1523.5	1473.6	41.2	Bullish
ATGL	697.6	729.5	713.5	702.8	686.9	676.2	692.8	677.7	33.7	Bullish
AUBANK	774.0	789.7	781.8	773.9	766.1	758.2	756.2	713.9	54.0	Bullish
AXISBANK	1231.4	1247.5	1239.4	1233.8	1225.7	1220.1	1207.5	1199.8	71.4	Bullish
BAJFINANCE	9425.0	9632.3	9528.7	9466.3	9362.7	9300.3	9367.1	9214.1	59.9	Bullish
BAJAJHFL	125.2	128.7	127.0	125.8	124.0	122.8	125.3	124.1	46.9	Bullish
BANDHANBNK	182.5	185.2	183.8	181.5	180.2	177.9	178.0	171.0	47.4	Bullish
BDL	1894.4	2007.3	1950.8	1918.5	1862.0	1829.7	1942.5	1918.5	35.6	Bearish
BHARTIARTL	1860.2	1876.9	1868.5	1858.2	1849.8	1839.5	1866.3	1848.2	79.2	Bullish
BHARTIHEXA	1801.7	1852.7	1827.2	1798.5	1773.0	1744.3	1811.8	1763.7	54.1	Bullish
BEL	392.9	401.6	397.2	393.9	389.6	386.3	393.4	382.7	52.9	Bullish
BHEL	257.0	263.9	260.4	258.0	254.5	252.1	256.7	255.0	33.6	Bullish
BHARATFORG	1333.6	1361.7	1347.7	1336.5	1322.5	1311.3	1316.6	1266.7	53.0	Bullish
BIOCON	354.5	367.4	360.9	349.5	343.0	331.6	338.9	336.6	38.9	Bullish
BAJAJ-AUTO	8719.0	8859.7	8789.3	8699.7	8629.3	8539.7	8636.1	8673.0	47.1	Bearish
BAJAJFINSV	2012.9	2054.4	2033.6	2008.3	1987.5	1962.2	1992.5	2013.3	61.2	Bearish
BAJAJHLDNG	14361.0	14782.3	14571.7	14421.3	14210.7	14060.3	14145.4	13579.5	37.6	Bullish
BANKBARODA	242.6	248.5	245.6	243.8	240.9	239.2	246.9	244.5	60.2	Bearish
BANKINDIA	124.0	128.3	126.1	124.8	122.6	121.3	125.6	120.6	59.1	Bullish
MAHABANK	56.0	57.4	56.7	56.0	55.2	54.5	56.0	53.4	40.9	Bullish
BOSCHLTD	31895.0	32211.7	32053.3	31786.7	31628.3	31361.7	31636.0	31671.8	48.1	Bearish
BPCL	333.9	343.8	338.8	329.6	324.6	315.4	320.2	317.6	41.5	Bullish
BRITANNIA	5650.0	5727.3	5688.7	5661.3	5622.7	5595.3	5644.3	5538.8	63.3	Bullish
BSE	2882.4	3105.3	2993.8	2908.5	2797.0	2711.7	2945.0	2617.5	28.8	Bullish
CANBK	117.1	120.5	118.8	117.3	115.6	114.1	116.9	111.8	61.2	Bullish
CONCOR	789.5	816.0	802.7	793.6	780.3	771.2	800.8	765.9	44.5	Bullish
CGPOWER	695.8	705.9	700.8	691.9	686.8	677.9	691.8	691.0	70.0	Bullish
CHOLAFIN	1608.2	1662.9	1635.5	1615.0	1587.6	1567.1	1599.1	1610.2	54.3	Bearish
CIPLA	1521.7	1538.2	1529.9	1519.7	1511.4	1501.2	1506.6	1485.4	60.9	Bullish
COLPAL	2432.1	2469.8	2451.0	2440.0	2421.2	2410.2	2443.7	2521.8	74.8	Bearish
COALINDIA	402.1	414.4	408.3	403.3	397.2	392.2	399.3	400.3	51.4	Bearish
COCHINSHIP	2194.8	2332.8	2263.8	2213.9	2144.9	2095.0	2299.5	2026.8	27.1	Bullish
COFORGE	1816.5	1862.5	1839.5	1825.0	1802.0	1787.5	1796.5	1714.0	59.9	Bullish

NSE 200 SUPPORT & RESISTANCE

SYMBOL	CLOSE	R2	R1	PIVOT	S1	S2	5 DMA	20 DMA	% Delivery	Trend
DABUR	486.5	496.9	491.7	488.5	483.3	480.2	486.3	482.7	66.3	Bullish
DIVISLAB	6719.0	6807.7	6763.3	6721.7	6677.3	6635.7	6639.8	6565.0	63.6	Bullish
DIXON	14790.0	15117.3	14953.7	14854.3	14690.7	14591.3	14847.0	15239.1	44.5	Bearish
DLF	868.6	887.1	877.8	870.4	861.1	853.7	864.2	794.9	43.2	Bullish
DMART	4078.2	4171.1	4124.7	4087.8	4041.4	4004.5	4138.5	4102.2	65.1	Bearish
DRREDDY	1351.1	1364.1	1357.6	1348.9	1342.4	1333.7	1326.1	1259.6	55.3	Bullish
EICHERMOT	5352.0	5468.3	5410.2	5376.3	5318.2	5284.3	5364.6	5390.1	66.8	Bearish
ESCORTS	3212.7	3306.4	3259.5	3233.3	3186.4	3160.2	3273.1	3399.0	55.9	Bearish
ETERNAL	257.1	262.4	259.7	257.5	254.9	252.6	257.6	240.3	53.8	Bullish
EXIDEIND	405.6	414.5	410.0	405.6	401.1	396.7	398.9	389.7	38.6	Bullish
FEDERALBNK	208.1	212.9	210.5	209.1	206.7	205.3	209.3	204.4	63.4	Bullish
GAIL	200.1	203.3	201.7	199.0	197.4	194.7	194.2	191.7	47.1	Bullish
GODREJCP	1223.8	1242.6	1233.2	1224.6	1215.2	1206.6	1216.1	1253.3	62.9	Bearish
GMRAIRPORT	84.5	86.6	85.5	84.8	83.8	83.1	85.4	86.4	53.0	Bearish
GLENMARK	1635.4	1674.2	1654.8	1621.9	1602.5	1569.6	1605.0	1481.5	56.9	Bullish
GODREJPROP	2447.7	2500.2	2474.0	2449.7	2423.5	2399.2	2430.4	2272.1	53.5	Bullish
GRASIM	2722.2	2767.1	2744.7	2711.4	2689.0	2655.7	2633.5	2644.0	55.5	Bearish
HAVELLS	1579.1	1589.3	1584.2	1577.1	1572.0	1564.9	1540.7	1551.0	65.0	Bearish
HCLTECH	1721.9	1763.8	1742.9	1704.4	1683.5	1645.0	1661.7	1652.9	62.9	Bullish
HDFCAMC	5123.9	5257.7	5190.8	5140.0	5073.1	5022.3	5087.1	4865.6	60.6	Bullish
HDFCBANK	1950.4	1975.6	1963.0	1955.0	1942.4	1934.4	1964.6	1939.3	78.3	Bullish
HDFCLIFE	764.2	777.6	770.9	765.6	758.9	753.6	760.8	764.3	40.3	Bearish
HEROMOTOCO	4410.3	4541.8	4476.0	4421.0	4355.2	4300.2	4317.1	4305.1	50.3	Bullish
HAL	5039.8	5193.3	5116.5	5068.3	4991.5	4943.3	5044.3	5003.8	37.7	Bullish
HINDALCO	655.2	666.2	660.7	657.4	651.9	648.6	650.4	650.4	58.8	Bearish
HINDPETRO	414.9	431.6	423.2	414.6	406.3	397.7	407.3	407.7	35.3	Bearish
HUDCO	239.0	248.8	243.9	240.3	235.4	231.9	243.6	237.9	38.6	Bullish
HINDUNILVR	2376.4	2415.1	2395.8	2383.5	2364.2	2351.9	2386.2	2369.2	79.9	Bullish
HYUNDAI	1937.1	1970.1	1953.6	1941.8	1925.3	1913.5	1906.8	1876.4	69.3	Bullish
HINDZINC	520.6	548.7	534.6	526.7	512.6	504.7	514.7	467.0	43.4	Bullish
ICICIBANK	1431.0	1443.9	1437.5	1428.0	1421.6	1412.1	1440.6	1445.7	72.9	Bearish
ICICIGI	1942.0	2001.0	1971.5	1952.4	1922.9	1903.8	1965.0	1890.5	64.3	Bullish
IDEA	6.9	7.3	7.1	7.0	6.8	6.7	6.9	6.9	34.8	Bullish
IDFCFIRSTB	71.3	72.8	72.1	71.5	70.7	70.2	70.7	68.5	41.3	Bullish
IGL	210.7	219.9	215.3	212.7	208.1	205.5	211.5	208.8	35.0	Bullish
INDHOTEL	765.8	793.8	779.8	769.6	755.6	745.3	774.8	769.9	60.2	Bearish
INDUSINDBK	836.3	857.7	847.0	840.7	830.0	823.8	828.8	805.7	38.1	Bullish
INDIANB	625.0	637.9	631.5	624.5	618.1	611.1	633.9	614.7	76.9	Bullish
INDIGO	5631.0	5693.0	5662.0	5621.5	5590.5	5550.0	5577.5	5469.5	71.8	Bullish
INDUSTOWER	387.9	400.4	394.1	390.1	383.8	379.8	390.5	387.9	66.3	Bearish
INFY	1631.1	1663.1	1647.1	1618.6	1602.6	1574.1	1583.6	1572.0	71.1	Bullish
NAUKRI	1505.9	1553.2	1529.6	1516.2	1492.6	1479.2	1508.4	1469.4	75.8	Bullish
IOC	145.2	149.9	147.5	144.8	142.5	139.8	142.1	143.0	43.2	Bearish
ICICIPRULI	642.2	652.5	647.4	642.3	637.2	632.1	638.3	638.8	54.6	Bearish
IRB	52.2	53.9	53.1	52.4	51.6	50.9	52.1	51.4	51.4	Bullish
IRCTC	783.0	803.4	793.2	785.7	775.5	768.1	784.1	783.3	46.2	Bearish
IREDA	182.3	187.1	184.7	182.1	179.7	177.1	179.9	174.7	30.3	Bullish
IRFC	145.5	149.1	147.3	145.9	144.1	142.7	145.9	140.7	35.3	Bullish
ITC	426.2	429.6	427.9	426.4	424.6	423.1	423.3	426.9	81.8	Bearish
JIOFIN	302.7	310.2	306.4	303.1	299.3	296.0	299.0	286.2	36.2	Bullish

NSE 200 SUPPORT & RESISTANCE

SYMBOL	CLOSE	R2	R1	PIVOT	S1	S2	5 DMA	20 DMA	% Delivery	Trend
JINDALSTEL	955.1	988.7	971.9	961.2	944.4	933.8	963.2	959.4	61.5	Bearish
JSWSTEEL	1007.1	1021.1	1014.1	1009.0	1002.0	997.0	998.4	1003.4	46.5	Bearish
JSWENERGY	535.5	547.8	541.6	537.0	530.8	526.2	526.9	507.0	37.1	Bullish
JUBLFOOD	685.6	700.1	692.9	687.8	680.5	675.4	692.3	676.1	40.3	Bullish
KALYANKJIL	535.2	555.3	545.3	539.6	529.6	523.9	550.2	556.3	50.8	Bearish
CUMMINSIND	3373.3	3421.5	3397.4	3379.2	3355.1	3336.9	3381.4	3152.6	68.2	Bullish
KOTAKBANK	2145.3	2174.0	2159.7	2146.3	2132.0	2118.6	2109.6	2087.7	62.8	Bullish
KPITTECH	1382.0	1415.5	1398.8	1379.2	1362.5	1342.9	1348.9	1339.9	34.5	Bullish
LICHSGFIN	620.2	632.7	626.5	621.0	614.7	609.2	615.0	605.1	51.4	Bullish
LICI	964.8	981.1	973.0	960.4	952.2	939.6	958.3	910.3	45.9	Bullish
LODHA	1475.8	1505.9	1490.8	1476.0	1460.9	1446.1	1486.5	1440.0	50.4	Bullish
LUPIN	2026.6	2047.9	2037.2	2018.8	2008.1	1989.7	2004.2	1989.4	53.6	Bullish
LT	3684.8	3713.5	3699.2	3677.6	3663.3	3641.7	3668.5	3634.5	64.5	Bullish
LTF	190.8	199.9	195.4	192.2	187.7	184.5	190.3	178.1	48.2	Bullish
LTIM	5394.0	5468.0	5431.0	5382.0	5345.0	5296.0	5284.5	5122.2	45.7	Bullish
MANKIND	2378.8	2464.8	2421.8	2397.0	2354.0	2329.2	2364.7	2444.2	49.8	Bearish
MFSL	1536.1	1569.2	1552.6	1537.2	1520.6	1505.2	1519.2	1467.8	52.9	Bullish
MAXHEALTH	1187.1	1209.6	1198.3	1190.6	1179.3	1171.6	1174.0	1161.3	69.2	Bullish
MAZADOCK	3314.6	3466.4	3390.5	3338.1	3262.2	3209.8	3383.3	3453.9	30.8	Bearish
M&M	3080.7	3141.6	3111.1	3093.6	3063.1	3045.6	3076.7	3059.7	50.4	Bullish
M&MFIN	281.0	285.9	283.5	280.8	278.4	275.7	276.8	265.0	48.2	Bullish
MOTILALOFS	850.8	913.8	882.3	856.2	824.7	798.5	866.9	810.5	58.7	Bullish
MOTHERSON	159.6	162.1	160.8	158.8	157.5	155.4	158.5	151.4	50.1	Bullish
MPHASIS	2679.9	2727.6	2703.7	2679.4	2655.5	2631.2	2605.9	2560.0	55.1	Bullish
MARICO	700.3	711.7	706.0	701.7	696.0	691.7	701.0	708.8	78.2	Bearish
MRF	136880.0	140560.0	138720.0	137610.0	135770.0	134660.0	138643.0	140570.3	39.5	Bearish
MARUTI	12452.0	12612.7	12532.3	12479.7	12399.3	12346.7	12439.4	12487.1	65.0	Bearish
MUTHOOTFIN	2538.6	2584.5	2561.6	2542.0	2519.1	2499.5	2474.6	2211.7	44.3	Bullish
NATIONALUM	190.0	193.6	191.8	190.4	188.6	187.1	188.0	183.3	43.0	Bullish
NESTLEIND	2419.2	2467.7	2443.5	2425.7	2401.5	2383.7	2416.9	2409.3	59.5	Bullish
NHPC	90.3	92.2	91.2	90.4	89.4	88.6	89.6	87.8	42.4	Bullish
NMDC	74.0	75.5	74.7	74.3	73.5	73.1	73.1	71.6	42.5	Bullish
NTPC	338.1	344.5	341.3	339.4	336.2	334.2	335.2	338.3	68.3	Bearish
NTPCGREEN	112.0	114.2	113.1	111.8	110.7	109.4	111.0	109.5	50.8	Bullish
NYKAA	199.1	202.0	200.6	199.1	197.6	196.2	199.1	199.5	57.6	Bearish
OBEROIRLTY	1901.0	1954.5	1927.7	1906.2	1879.4	1857.9	1886.2	1771.0	48.3	Bullish
OFSS	9429.5	9765.2	9597.3	9449.2	9281.3	9133.2	9121.8	8636.1	27.5	Bullish
OIL	465.3	484.1	474.7	458.6	449.2	433.2	436.8	428.7	20.6	Bullish
OLAELEC	48.4	49.9	49.2	48.6	47.9	47.3	48.9	51.2	47.9	Bearish
ONGC	247.3	253.9	250.6	247.1	243.8	240.2	242.5	243.4	49.4	Bearish
PAGEIND	46710.0	47806.7	47258.3	46936.7	46388.3	46066.7	46328.0	46793.5	59.3	Bearish
PATANJALI	1674.7	1710.3	1692.5	1680.2	1662.4	1650.1	1691.5	1717.6	49.1	Bearish
PAYTM	960.5	989.3	974.9	963.6	949.2	938.0	958.8	894.5	37.8	Bullish
PRESTIGE	1666.5	1707.8	1687.2	1668.8	1648.2	1629.8	1675.9	1519.4	56.5	Bullish
PHOENIXLTD	1650.0	1719.7	1684.8	1658.0	1623.1	1596.3	1610.6	1592.8	35.8	Bullish
PIIND	3975.0	4025.1	4000.1	3959.9	3934.9	3894.7	3927.5	3811.2	65.1	Bullish
PIDILITIND	3060.2	3090.7	3075.5	3064.7	3049.5	3038.7	3059.7	3053.3	73.8	Bullish
PETRONET	309.4	315.9	312.6	309.8	306.6	303.8	308.5	313.5	65.5	Bearish
PNB	110.3	112.8	111.5	110.6	109.4	108.5	110.7	104.8	40.1	Bullish
POLICYBZR	1887.0	1919.3	1903.1	1878.9	1862.7	1838.5	1893.4	1790.8	61.6	Bullish

NSE 200 SUPPORT & RESISTANCE

SYMBOL	CLOSE	R2	R1	PIVOT	S1	S2	5 DMA	20 DMA	% Delivery	Trend
POLYCAB	6166.5	6266.5	6216.5	6168.5	6118.5	6070.5	6107.5	6016.8	48.4	Bullish
PFC	428.7	440.9	434.8	430.1	424.0	419.4	423.5	413.6	43.6	Bullish
PREMIERENE	1058.0	1115.7	1086.8	1070.2	1041.3	1024.7	1061.4	1066.0	43.7	Bearish
PERSISTENT	5965.5	6043.5	6004.5	5954.5	5915.5	5865.5	5800.3	5666.1	49.2	Bullish
POWERGRID	295.5	304.4	299.9	297.0	292.5	289.6	297.4	295.5	70.6	Bearish
RECLTD	419.3	432.7	426.0	421.0	414.3	409.4	417.3	406.2	51.6	Bullish
RELIANCE	1448.9	1479.0	1464.0	1453.5	1438.5	1428.0	1444.4	1430.7	52.0	Bullish
RVNL	427.8	441.8	434.8	428.7	421.7	415.7	428.9	415.0	24.3	Bullish
SAIL	133.2	135.0	134.1	133.3	132.4	131.7	133.6	128.6	44.6	Bullish
SBICARD	992.0	1008.6	1000.3	995.7	987.4	982.8	989.7	931.0	62.6	Bullish
SBILIFE	1799.3	1818.3	1808.8	1791.4	1781.9	1764.5	1786.2	1787.1	71.4	Bearish
SBIN	815.1	823.8	819.4	816.2	811.9	808.7	814.2	801.9	53.1	Bullish
SHRIRAMFIN	686.1	708.6	697.3	690.8	679.6	673.1	684.8	663.7	52.9	Bullish
SUPREMEIND	4350.7	4472.0	4411.4	4371.9	4311.3	4271.8	4371.3	4093.8	49.5	Bullish
SIEMENS	3349.9	3421.8	3385.9	3362.0	3326.1	3302.2	3336.6	3264.1	55.1	Bullish
SJVN	103.2	107.2	105.2	103.8	101.8	100.5	103.4	101.4	35.3	Bullish
SOLARINDS	16587.0	17262.3	16924.7	16697.3	16359.7	16132.3	16773.4	15673.1	45.2	Bullish
SONACOMS	519.0	541.0	530.0	523.7	512.7	506.3	519.0	532.6	24.7	Bearish
SHREECEM	29830.0	30440.0	30135.0	29895.0	29590.0	29350.0	29719.0	30440.5	64.4	Bearish
SRF	3085.2	3117.9	3101.5	3083.3	3066.9	3048.7	3106.7	2966.6	76.3	Bullish
SUZLON	67.6	70.3	69.0	68.0	66.7	65.8	67.3	65.2	37.2	Bullish
SUNPHARMA	1690.6	1704.0	1697.3	1688.3	1681.6	1672.6	1687.2	1694.7	66.4	Bearish
SWIGGY	356.1	366.2	361.1	356.6	351.5	347.0	364.2	334.9	49.6	Bullish
TATASTEEL	156.4	158.6	157.5	156.4	155.3	154.2	157.0	159.3	36.1	Bearish
TATACONSUM	1104.3	1125.4	1114.9	1108.4	1097.9	1091.4	1113.6	1127.5	64.8	Bearish
TATATECH	785.0	805.0	795.0	787.0	776.9	768.9	774.3	763.6	36.9	Bullish
TATACOMM	1712.8	1751.3	1732.1	1714.5	1695.3	1677.7	1723.7	1680.3	40.2	Bullish
TCS	3471.9	3509.9	3490.9	3470.0	3451.0	3430.1	3422.4	3475.9	75.4	Bearish
TECHM	1637.5	1674.8	1656.1	1630.4	1611.7	1586.0	1592.3	1586.2	51.0	Bullish
TATAELXSI	6624.5	6721.5	6673.0	6631.5	6583.0	6541.5	6585.1	6398.0	21.3	Bullish
TIINDIA	3027.6	3155.7	3091.7	3055.8	2991.8	2955.9	3061.7	3041.2	47.5	Bearish
TORNTPOWER	1432.4	1487.4	1459.9	1441.2	1413.7	1395.0	1421.9	1411.8	50.8	Bullish
TATAPOWER	412.1	420.2	416.1	412.7	408.7	405.3	404.9	400.4	48.9	Bullish
TRENT	5776.5	5869.8	5823.2	5791.3	5744.7	5712.8	5790.8	5600.6	53.7	Bullish
TORNTPHARM	3205.8	3244.9	3225.4	3205.3	3185.8	3165.7	3180.7	3196.0	62.0	Bearish
TITAN	3541.6	3575.9	3558.7	3531.9	3514.7	3487.9	3532.7	3564.8	61.2	Bearish
TATAMOTORS	736.4	750.7	743.6	736.9	729.7	723.0	721.5	720.5	38.2	Bullish
TVSMOTOR	2771.0	2839.0	2805.0	2775.0	2741.0	2711.0	2744.9	2775.9	41.7	Bearish
UNIONBANK	152.8	156.8	154.8	153.1	151.1	149.4	153.7	145.0	49.9	Bullish
UNITDSPR	1503.8	1576.9	1540.3	1511.5	1474.9	1446.1	1582.0	1558.6	45.8	Bearish
UPL	635.9	646.2	641.0	636.3	631.1	626.4	640.9	636.7	54.4	Bearish
ULTRACEMCO	11464.0	11618.7	11541.3	11440.7	11363.3	11262.7	11305.4	11456.7	64.6	Bearish
VBL	475.1	484.2	479.6	474.8	470.3	465.5	474.6	481.4	67.2	Bearish
VEDL	469.3	479.1	474.2	468.2	463.3	457.2	455.2	444.1	46.5	Bullish
VMM	129.0	133.9	131.5	129.4	126.9	124.8	129.1	125.9	48.3	Bullish
VOLTAS	1312.3	1343.4	1327.9	1312.4	1296.9	1281.4	1287.0	1263.5	48.3	Bullish
WAAREEENER	2884.0	3003.8	2943.9	2896.9	2837.0	2790.0	2841.8	2884.4	25.2	Bearish
WIPRO	258.9	265.7	262.3	258.2	254.8	250.7	252.3	250.2	50.4	Bullish
YESBANK	20.7	21.2	21.0	20.8	20.6	20.4	20.9	21.2	42.9	Bearish
ZYDUSLIFE	978.8	998.6	988.7	982.6	972.7	966.6	970.0	927.5	45.7	Bullish

Disclosure & Disclaimer :

HDFC Securities Limited (HSL) is a SEBI Registered Research Analyst having registration no. INH000002475.

This report has been prepared by HDFC Securities Ltd and is solely for information of the recipient only. The report must not be used as a singular basis of any investment decision. The views herein are of a general nature and do not consider the risk appetite or the particular circumstances of an individual investor; readers are requested to take professional advice before investing. "This report may have been refined using AI tools to enhance clarity and readability."

Nothing in this document should be construed as investment advice. Each recipient of this document should make such investigations as they deem necessary to arrive at an independent evaluation of an investment in securities of the companies referred to in this document (including merits and risks) and should consult their own advisors to determine merits and risks of such investment. The information and opinions contained herein have been compiled or arrived at, based upon information obtained in good faith from sources believed to be reliable. Such information has not been independently verified and no guaranty, representation of warranty, express or implied, is made as to its accuracy, completeness or correctness. All such information and opinions are subject to change without notice. Descriptions of any company or companies or their securities mentioned herein are not intended to be complete. HSL is not obliged to update this report for such changes. HSL has the right to make changes and modifications at any time.

This report is not directed to, or intended for display, downloading, printing, reproducing or for distribution to or use by, any person or entity who is a citizen or resident or located in any locality, state, country or other jurisdiction where such distribution, publication, reproduction, availability or use would be contrary to law or regulation or what would subject HSL or its affiliates to any registration or licensing requirement within such jurisdiction.

If this report is inadvertently sent or has reached any person in such country, especially, United States of America, the same should be ignored and brought to the attention of the sender. This document may not be reproduced, distributed or published in whole or in part, directly or indirectly, for any purposes or in any manner.

Foreign currencies denominated securities, wherever mentioned, are subject to exchange rate fluctuations, which could have an adverse effect on their value or price, or the income derived from them. In addition, investors in securities such as ADRs, the values of which are influenced by foreign currencies effectively assume currency risk. It should not be considered to be taken as an offer to

sell or a solicitation to buy any security.

This document is not, and should not, be construed as an offer or solicitation of an offer, to buy or sell any securities or other financial instruments. This report should not be construed as an invitation or solicitation to do business with HSL. HSL may from time to time solicit from, or perform broking, or other services for, any company mentioned in this mail and/or its attachments.

HSL and its affiliated company(ies), their directors and employees may; (a) from time to time, have a long or short position in, and buy or sell the securities of the company(ies) mentioned herein or (b) be engaged in any other transaction involving such securities and earn brokerage or other compensation or act as a market maker in the financial instruments of the company(ies) discussed herein or act as an advisor or lender/borrower to such company(ies) or may have any other potential conflict of interests with respect to any recommendation and other related information and opinions.

HSL, its directors, analysts or employees do not take any responsibility, financial or otherwise, of the losses or the damages sustained due to the investments made or any action taken on basis of this report, including but not restricted to, fluctuation in the prices of shares and bonds, changes in the currency rates, diminution in the NAVs, reduction in the dividend or income, etc.

HSL and other group companies, its directors, associates, employees may have various positions in any of the stocks, securities and financial instruments dealt in the report, or may make sell or purchase or other deals in these securities from time to time or may deal in other securities of the companies / organizations described in this report. As regards the associates of HSL please refer the website.

HSL or its associates might have managed or co-managed public offering of securities for the subject company or might have been mandated by the subject company for any other assignment in the past twelve months.

Please note that HDFC Securities has a proprietary trading desk. This desk maintains an arm's length distance with the Research team and all its activities are segregated from Research activities. The proprietary desk operates independently, potentially leading to investment decisions that may deviate from research views.

HSL or its associates might have received any compensation from the companies mentioned in the report during the period preceding twelve months from the date of this report for services in respect of managing or co-managing public offerings, corporate finance, investment banking or merchant banking, brokerage services or other advisory service in a merger or specific transaction in the normal course of business.

HSL or its analysts did not receive any compensation or other benefits from the companies mentioned in the report or third party in connection with preparation of the research report. Accordingly, neither HSL nor Research Analysts have any material conflict of interest at the time of publication of this report. Compensation of our Research Analysts is not based on any specific merchant banking, investment banking or brokerage service transactions. HSL may have issued other reports that are inconsistent with and reach different conclusion from the information presented in this report.

Research entity has not been engaged in market making activity for the subject company. Research analyst has not served as an officer, director or employee of the subject company. We have not received any compensation/benefits from the subject company or third party in connection with the Research Report.

HDFC securities Limited, I Think Techno Campus, Building - B, "Alpha", Office Floor 8, Near Kanjurmarg Station, Opp. Crompton Greaves, Kanjurmarg (East), Mumbai 400 042 Phone: (022) 3075 3400 Fax: (022) 2496 5066

Compliance Officer: Murli V Karkera Email: complianceofficer@hdfcsec.com Phone: (022) 3045 3600

For grievance redressal contact Customer Care Team Email: customercare@hdfcsec.com Phone: (022) 3901 9400

HDFC Securities Limited, SEBI Reg. No.: NSE, BSE, MSEI, MCX: INZ000186937; AMFI Reg. No. ARN: 13549; PFRDA Reg. No. POP: 11092018; IRDA Corporate Agent License No.: CA0062; SEBI Research Analyst Reg. No.: INH000002475; SEBI Investment Adviser Reg. No.: INA000011538; CIN - U67120MH2000PLC152193

Investment in securities market are subject to market risks. Read all the related documents carefully before investing.

Mutual Funds Investments are subject to market risk. Please read the offer and scheme related documents carefully before investing.

Registration granted by SEBI, membership of BASL (in case of IAs) and certification from NISM in no way guarantee performance of the intermediary or provide any assurance of returns to investors.